



Do you have **fatty liver disease?**

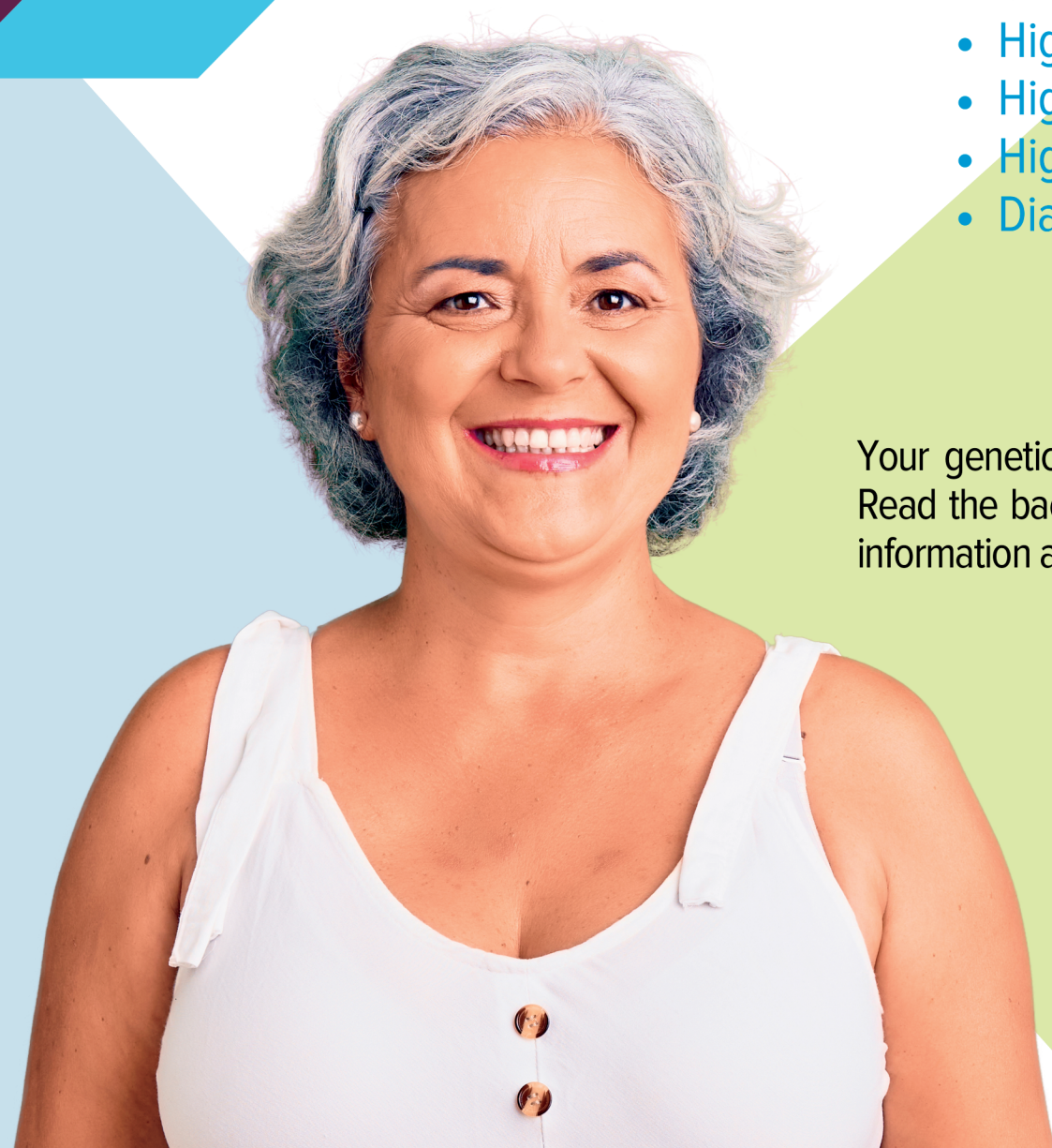
Common Risk Factors:

- Overweight/obesity
- High cholesterol
- High blood sugar
- High blood pressure
- Diabetes

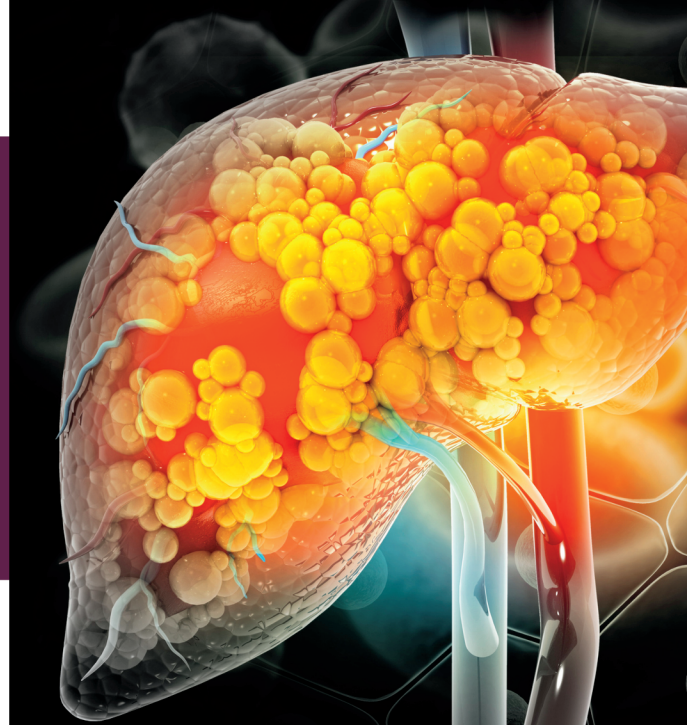
Your genetics may have a role to play.
Read the back of this flyer for additional
information and contact us to participate.



931.245.8444



The Genetics of FATTY LIVER DISEASE



Why is this pre-screening study taking place?

Nonalcoholic Steatohepatitis (NASH) is a form of fatty liver disease that is rapidly emerging as a leading cause of liver transplants in the US. Genetic variants may lead to a higher risk of developing NASH, and an overall worse disease outcome. In this study, we are pre screening individuals to see if they carry variants known to be related to NASH.

With these results, you may be eligible for ongoing and future NASH clinical trials.

By participating in this genetic pre-screening study and potential future NASH studies, we can better understand the genetic component of NASH.

Why take part?

By taking part in this study, you will get access to no-cost, non-invasive, at-home genetic testing and - if eligible - the opportunity to meet with a qualified genetic counselor.

The genetic counselor will help you understand your test results, and what they mean for you. Depending on your genetic results, you may also be eligible for additional NASH clinical trials through your local referring physician.

What is involved?

Once you have created an account, we will ask that you complete a digital consent form for this NASH Genetic Pre-screening Study.

You will then receive a saliva collection kit in the mail which, once returned to us*, will be tested for specific genetic variants associated with NASH using an investigational genetic test.

(Note: the return postage is prepaid and the kit can be returned at no cost to you)

We will return your test results to you via a detailed report, and you will be given the option to discuss the findings one-to-one with a qualified genetic counselor.

Where can I find out more information?

If you're interested in taking part, call Premier's Research Department at 931.245.8444 for additional information.

This information has been shared with you because your medical records indicate you may be eligible for this pre-screening study. Please do not share with other individuals.

YOU MAY
BE ELIGIBLE
TO PARTICIPATE

*Contact us for
more information!*



Premier
MEDICAL GROUP

CLINICAL RESEARCH

LEARN MORE AT
PremierMed.com/Research

931.245.8444